

COR-577BDS

700+ TV LINE OUTDOOR DOME w/ INFRARED

Designer Black, Dual Power and Sniper IR LED Enabled

This premium quality outdoor dome camera is packed with features. Users get true 700-TV line (or greater) color imaging with exceptional color reproduction and clarity. This super high resolution is made possible by pairing a 1/3" Sony EXview video sensor with Effio Sony video processing technology. A high intensity IR LED lets this dome operate in complete darkness.

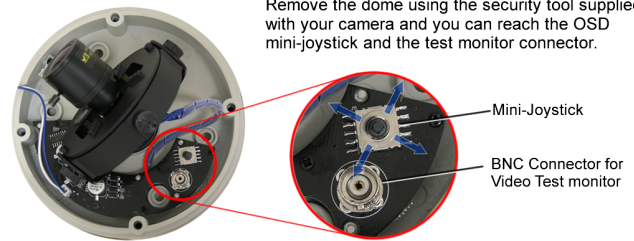
technology you need - and why



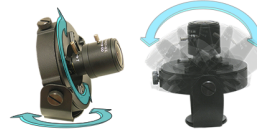
- SUPERIOR TO STARLIGHT IN LOW LIGHT W/O SLOW SHUTTER BLURRING ISSUES
- VIBRATION RESISTANT HEAVY DUTY BRACKET WON'T SHIFT
- DESIGNED FOR IR REFLECTION /HAZE GLARE IMMUNITY
- MEGAPIXEL VARIFOCA LENS WITH AUTO IRIS

Mini-Joystick & Test Monitor Connector

Remove the dome using the security tool supplied with your camera and you can reach the OSD mini-joystick and the test monitor connector.



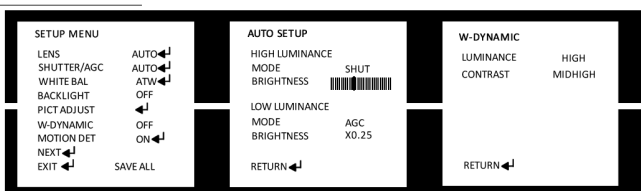
Vibration Resistant Internal Bracket Prevents Camera Shift



The 3D heavy duty gimbaled bracket lets users aim the camera in any direction. The heavy metal construction makes it resistant to vibration and shock, making this camera perfect for mobile applications like buses, elevators, trains, even loading docks and places with heavy, moving machinery.

Specifications

RESOLUTION	700 TV-Lines or more
VIDEO SENSOR	1/3" color Sony EXview CCD sensor
CHIPSET	Matched Sony chipset Effio AFE Digital Signal Processing (DSP)
VARIFOCA LENS	2.8-12mm MEGAPIXEL rated
AUTO-IRIS	No
EFFECTIVE PIXELS	Greater than 379k (NTSC)
SIGNAL FORMAT	NTSC 1Vp-p, 75 ohm (PAL available on request)
MIN. ILLUMINATION	0.0 LUX with IR on
INFRARED SYSTEM	Single Point Sniper High Intensity IR LED, 30' range, 850nm
IMAGE PROTECTION	AWB, BLC, AGC, AES, ATR, more - configure with OSD menu
SHUTTER	1/60 to 1/10,000 (default AES), can be changed with OSD menu
BRACKET	Internal 3D gimbaled metal heavy duty bracket, immune to vibration
HOUSING	Solid alloy, tested to withstand attack, anti-vandal / anti-tamper
DOMES	Tough smoke tinted acrylic, tested to withstand vandalism
DUAL POWER	12VDC/24VAC (300mA nominal, ~500mA with IR on)
OPERATING TEMP.	+14° to +122° F (-10° to +50° C)
DIMENSIONS	5.25" diameter at base, 4.75" tall
WEATHERPROOF	Rated IP66, good for outdoor or indoor placement
ANTI-TAMPER	Cables feed through base to prevent unwanted attention
OSD MENU	Multiple screens, samples below. Internal mini-joystick control.



ADVANCED IMAGING, ADVANCED OSD MENU

W-Dynamic Range (WDR) Protection

Surveillance cameras often have to deal with environments where lighting conditions are not perfect. Important subjects may be positioned in front of a strong source of light. WDR is an advanced form of dynamic range that uses multiple frame exposures to enhance the image so that subjects in the foreground are not washed out by high values of light (or a bright object) in the background, even with rapid and unpredictable changes in the light source (value or position). WDR reacts faster and more accurately than standard dynamic range.



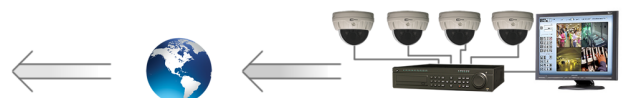
OSD Menu with PREPRO

PrePro is a time saving feature. It is turned ON when you first set up the camera and you can turn it on manually by performing a the RESET command in the OSD menu.

PrePro (Pre-Programmed) returns all camera parameters and features to a factory setting determined by professionals to be the best setting for the widest range of surveillance environments. It saves the user/installer time during initial setup and whenever the camera needs to be moved are adjusted.

Once set to PrePro, the camera often requires only minor adjustments to get the best picture. This can save a lot of time and can be a big help when setting up dozens of cameras in a large installation.

EXAMPLE CONFIGURATION USING OPTIONAL PRODUCTS



COR-577BDS

