



ONLY
8.1"



KEY FEATURES

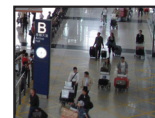
- 1/2.7" PROGRESSIVE SCAN CMOS
- 1080P FULL HD-SDI @ 30 FRAMES PER SECOND
- 10X OPTICAL ZOOM WITH AUTO FOCUS
- 300° PER SECOND MAX SPEED
- TRANSIENT VOLTAGE PROTECTION 6000V
- MECHANICAL IR CUT FILTER
- 2 MEGAPIXEL IMAGE SENSOR
- INTELLIGENT IR ILLUMINATION - IR SYSTEM MOVES IN SYNC WITH CAMERA
- SMART PATTERN RECORDING

SPECIFICATIONS

CAMERA	
Resolution	1080P FULL HD-SDI @ 30 Frames Per Second
Sensor	1/2.7" Progressive scan CMOS
Image Sensor	2 megapixel
Effective Pixels	Approximately 2 million
Progressive Scanning	Yes
Lens	Optical Magnification : 10X, Focal Distance: 4.9 - 49.0mm
Minimum Illumination	0.01 Lux
Focus	Auto, Manual
Infrared Cut	Auto, Manual
Automatic Gain Control	Auto, Manual
Iris	Auto, Manual
Back Light Compensation	Auto, Manual
White Balance	Auto, Manual
Video Output	(Y: 8bit, C: 8bit, HSYNC, VSYNC, DCLK)
Video Format	720P/30 - 1080P/30
Camera Module Control Interface	Sony VISCA(Signal level 3.3V), baud rate: 96 Kb/s, 19.2 Kb/s, 38.4 Kb/s stop bit selectable
DOME	
Horizontal Viewing Angle	51.8° (wide end) - 5.86° (tele end)
Housing	Metal body construction-ABS lower unit
Weatherproof rating	IP66
Pan range	360° Infinite Continuous Rotation
Tilt range	0°~93° Auto Flip 180°
Manual Tilt speed	0.02~100°/S
Tilt Range	0°~93° Auto Flip 180°
Preset Points	220
Pattern Scan	Smart pattern recording
Guard Tours	4 groups
Guard Points	Max.16 points, dwell time user selectable
Operating Temperature	Indoor: 0°~ +40° Outdoor: -40°~ +60°
Power	24 VAC / 3A



10 X
OPTICAL
ZOOM



FULL LINE OF ACCESSORIES

Additional OSD Options:

Exposure-wb-manual-special-cam-title-motion-privacy-park-line-image-adj-comm-adj-language-area-state-height-width-mirror-font-contrast-sharpness

Function Parameters	
Operation Menu	Multiple Languages for OSD menu, English, Spanish etc
Pan and Tilt	360° continuous pan rotation, 90° tilt range
Image sensor	2 megapixel 1080P
IR Parameters	
Pulse Width Modulation	Yes
Support ambient light detection	IR illumination on 1-15 grades selectable
Infrared LEDs	IR Megawatt high power system
Infrared Distance	50m (200 feet)
Flashlight	No White light , Infrared model
Weight and Dimensions	
Weight	2.7kg 5.9 lbs
Certificates	IP66, ROHS, CE, FCC